



AUSTRALIAN CATHOLIC UNIVERSITY
8-20 NAPIER STREET, NORTH SYDNEY
ALTERATIONS AND ADDITIONS

AX004165_DA000 COVER SHEET
AX004165_DA001 LEGENDS AND NOTES

AX004165_DA101 SITE PLAN
AX004165_DA200 LEVEL 03 (CAR PARK) EXISTING & PROPOSED DEMOLITION
AX004165_DA201 LEVEL 04 (GROUND) EXISTING & PROPOSED DEMOLITION
AX004165_DA202 LEVEL 05-10 TYPICAL EXISTING & PROPOSED DEMOLITION
AX004165_DA203 LEVEL 23 EXISTING & PROPOSED DEMOLITION

AX004165_DA210 PROPOSED LEVEL 03 (CAR PARK)
AX004165_DA211 PROPOSED LEVEL 04 (GROUND)
AX004165_DA212 PROPOSED LEVEL 05
AX004165_DA213 PROPOSED LEVEL 06-09
AX004165_DA214 PROPOSED LEVEL 10
AX004165_DA217 PROPOSED LEVEL 23
AX004165_DA218 PROPOSED ROOF

AX004165_DA501 EXISTING ELEVATIONS
AX004165_DA502 PROPOSED ELEVATIONS SHEET 01
AX004165_DA503 PROPOSED ELEVATIONS SHEET 02

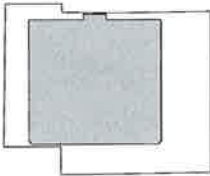
AX004165_DA601 PROPOSED SECTIONS

AX004165_DA901 SHADOW DIAGRAMS - JUNE
AX004165_DA902 SHADOW DIAGRAMS - MARCH
AX004165_DA903 SHADOW DIAGRAMS - SEPTEMBER
AX004165_DA910 FINISHES SCHEDULE

NORTH SYDNEY COUNCIL
RECEIVED DMS
24 SEP 2012
SCANNED DMS

RECEIVED BY CS
21 SEP 2012
NORTH SYDNEY COUNCIL

REFERENCE MAP



NORTH

NOTES
1. DO NOT SCALE DRAWINGS. WRITTEN DIMENSIONS GOVERN.
2. ALL DIMENSIONS ARE IN MILLIMETRES UNLESS NOTED OTHERWISE.
3. ALL DIMENSIONS SHALL BE VERIFIED ON SITE BEFORE PROCEEDING WITH THE WORK. HASSELL SHALL BE NOTIFIED IN WRITING OF ANY DISCREPANCIES.
4. THIS DRAWING MUST BE READ IN CONJUNCTION WITH ALL RELEVANT CONTRACTS, SPECIFICATIONS AND DRAWINGS.
5. REFER TO AX004165_DA001 FOR LEGEND AND NOTES
© COPYRIGHT OF THIS DRAWING IS VESTED IN HASSELL, LTD.
2010 HASSELL, LTD.

THIS DRAWING IS AN UNCONTROLLED COPY, UNLESS NOTED OTHERWISE.

03	DA REPORT	18 09 2012
02	DA ISSUE	27 02 2012
01	CONSULTANT CO-ORDINATION	14 02 2012

REV	DESCRIPTION	DATE
-----	-------------	------

CONSULTANT
HASSELL LIMITED ACN 007 711 435
88 CUMBERLAND STREET
SYDNEY NSW 2000 AUSTRALIA
SYDNEY@HASSELLSTUDIO.COM
T 61 2 9273 2300 F 61 2 9273 2345

HASSELL

PROJECT
AUSTRALIAN CATHOLIC UNIVERSITY
8-20 NAPIER STREET, NORTH SYDNEY
ALTERATIONS AND ADDITIONS

DRAWING TITLE
COVER SHEET

STATUS				
DEVELOPMENT APPLICATION				
SCALE @ A1	DRAWN	CO-ORD	REVIEWED	APPROVED
1:50	GS	KR	KR	MB
PROJECT NUMBER		DRAWING NUMBER		REV
AX004165		AX004165_DA000		03

LEGEND & NOTES

RC1	NEW REINFORCED CONCRETE WALLS TO STRUCTURAL ENGINEERS FUTURE DETAIL. WALL TO HAVE RENDERED PAINT FINISH.
GCS1	NEW DOUBLE GLAZED CURTAIN WALL SYSTEM WITH STRUCTURAL SILICONE VERTICAL MULLIONS AND ALUMINIUM FRAMED HORIZONTAL TRANSOM. GLASS TO HAVE 50% WHITE FRIT.
GCS2	NEW DOUBLE GLAZED CURTAIN WALL SYSTEM WITH STRUCTURAL SILICONE VERTICAL MULLIONS AND ALUMINIUM FRAMED HORIZONTAL TRANSOM. CLEAR GLASS.
GCS3	NEW WHITE COLOUR BACKED GLASS.
GCS4	NEW BLACK COLOUR BACKED GLASS.
GF	NEW FIXED ALUMINIUM FRAMED GLAZING SYSTEM TO INFILL OPENING IN EXISTING ARCHWAYS.
W1	NEW 200 CONCRETE WALL.FIRE RATING AS REQUIRED BY THE BCA 2011. RENDERED PAINT FINISH.
W3	NEW 110 STUD FRAMED WALL WITH PLASTERBOARD LINING,INSULATION AND PAINT FINISH. MOISTURE RESISTANT PLASTERBOARD TO WET AREAS WITH TILED FINISH.
W4	NEW REINFORCED CONCRETE LANDSCAPE WALLS. RENDERED PAINT FINISH TO MATCH EXISTING COLOUR OF CARPAK/BASEMENT WALLS.
W5	NEW WALLS TO EXTERNAL ENTRY STAIRS WITH STAINLESS STEEL HANDRAILS. PAINT FINISH T TO MATCH W4.
GB	NEW 1500H FRAMELESS CLEAR GLASS BALUSTRADE AND HANDRAIL..
GR1	FULL HEIGHT ALUMINIUM MECHANICAL LOUVRE GRILLS WITH ANODISED FINISH TO MATCH EXISTING BUILDING WINDOW FRAMES.
CS1	EXISTING COLUMNS TO BE STRUCTURALLY STRENGTHENED - TO FUTURE STRUCTURAL ENGINEERS DETAIL.
SS1	NEW STAIR AND LANDINGS WITH STAINLESS STEEL HANDRAILS. STRUCTURE TO FUTURE STRUCTURAL ENGINEERS DETAIL.
C1	NEW 400x400 REINFORCED CONCRETE COLUMN - TO STRUCTURAL ENGINEERS FUTURE DETAIL. COLUMNS TO INCORPORATE DOWNPIPES FROM NEW ROOF AND TERRACE.
C2	NEW 400 DIAMETER REINFORCED CONCRETE COLUMN - TO STRUCTURAL ENGINEERS FUTURE DETAIL. COLUMNS TO INCORPORATE DOWNPIPES FROM NEW ROOF AND TERRACE.
FC1	NEW FIRE CURTAIN IN CEILING FOR LEVEL 08 & 09 ONLY.
AD	NEW AUTOMATIC SLIDING GLAZED DOORS WITH 50% WHITE FRIT FINISH.
PV	NEW PAVING TO EXTERNAL AND INTERNAL AREAS.
ES	NEW PODIUM EXTERNAL STAIRS WITH PAVED FINISH AND STAINLESS STEEL HANDRAILS. NEW STAIRS TO BE FORMED ON TOP OF EXISTING STAIRS.
RSWP	RELOCATED OR NEW STORM WATER DRAINAGE.
RDP	RELOCATED DRAINAGE PIT.
CD	NEW CONTINUOS STAINLESS STEEL GRATED DRAIN FOR ROOF TERRACE DRAINAGE.
RCS	NEW REINFORCED CONCRETE ROOF SLAB WITH WATERPROOF MEMBRANE.
AIV	RELOCATED CARPARK AIR-INTAKE VENT.
SG	NEW BOOK SENSOR TURNSTILES TO EXIT LIBRARY
MT	NEW DOOR ENTRY MATT WITH DRAINAGE UNDER SET FLUSH INTO NEW FINISHED FLOOR.
MP	NEW CONDENSER WATER PIPES TO LEVEL 5-9 CONCEALED WITHIN NEW ANODISED ALUMINIUM CAPPED SHAFT DOWN BUILDING TO LEVEL 5.


PA1	NEW PAINT FINISH TO EXISTING BUILDING ARCHWAYS AND COLUMNS ON GROUND FLOOR.
PA2	NEW PAINT FINISH TO LANDSCAPE WALLS TO MATCH EXISTING COLOUR OF MASONRY WALLS TO CARPARK.

NOTE:
1.NEW DRAINAGE FROM ROOF TERRACE AND TOWER ROOF TO BE CONCEALED INSIDE NEW BUILDING ENVELOPE.
2. ALL NEW STRUCTURAL REINFORCED CONCRETE WALLS, COLUMNS, SLAB AND BEAMS TO BE FIRE RATED AS REQUIRED BY THE BCA 2011
3. UPGRADE TO EXISTING FIRE HYDRANTS IS REQUIRED TO MEET AS2419.1 REFER TO FIRE SERVICES UPGRADE REPORT SUBMITTED WITH THIS DA.


NORTH SYDNEY COUNCIL - COLOUR CODE

	CONCRETE
	TILE/PAVING
	GLASS
	STEEL
	STUD WALLS
	TIMBER

REFERENCE MAP



NORTH



NOTES

1. DO NOT SCALE DRAWINGS. WRITTEN DIMENSIONS GOVERN.

2. ALL DIMENSIONS ARE IN MILLIMETRES UNLESS NOTED OTHERWISE.

3. ALL DIMENSIONS SHALL BE VERIFIED ON SITE BEFORE PROCEEDING WITH THE WORK. HASSELL SHALL BE NOTIFIED IN WRITING OF ANY DISCREPANCIES.

4. THIS DRAWING MUST BE READ IN CONJUNCTION WITH ALL RELEVANT CONTRACTS, SPECIFICATIONS AND DRAWINGS.

5. REFER TO AX004165_DA001 FOR LEGEND AND NOTES

© COPYRIGHT OF THIS DRAWING IS VESTED IN HASSELL LTD. 2010 HASSELL LTD.

THIS DRAWING IS AN UNCONTROLLED COPY. UNLESS NOTED OTHERWISE.

03	DA REPORT	18.09.2012
02	ISSUE FOR DA	27.02.2012
01	CONSULTANT CO-ORDINATION	14.02.2012

REV	DESCRIPTION	DATE

CONSULTANT

HASSELL LIMITED ACN 007 711 435
88 CUMBERLAND STREET
SYDNEY NSW 2009 AUSTRALIA
SYDNEY@HASSELLSTUDIO.COM
T 61 2 9273 2300 F 61 2 9273 2345

HASSELL

PROJECT

AUSTRALIAN CATHOLIC UNIVERSITY
8-20 NAPIER STREET, NORTH SYDNEY
ALTERATIONS AND ADDITIONS

DRAWING TITLE

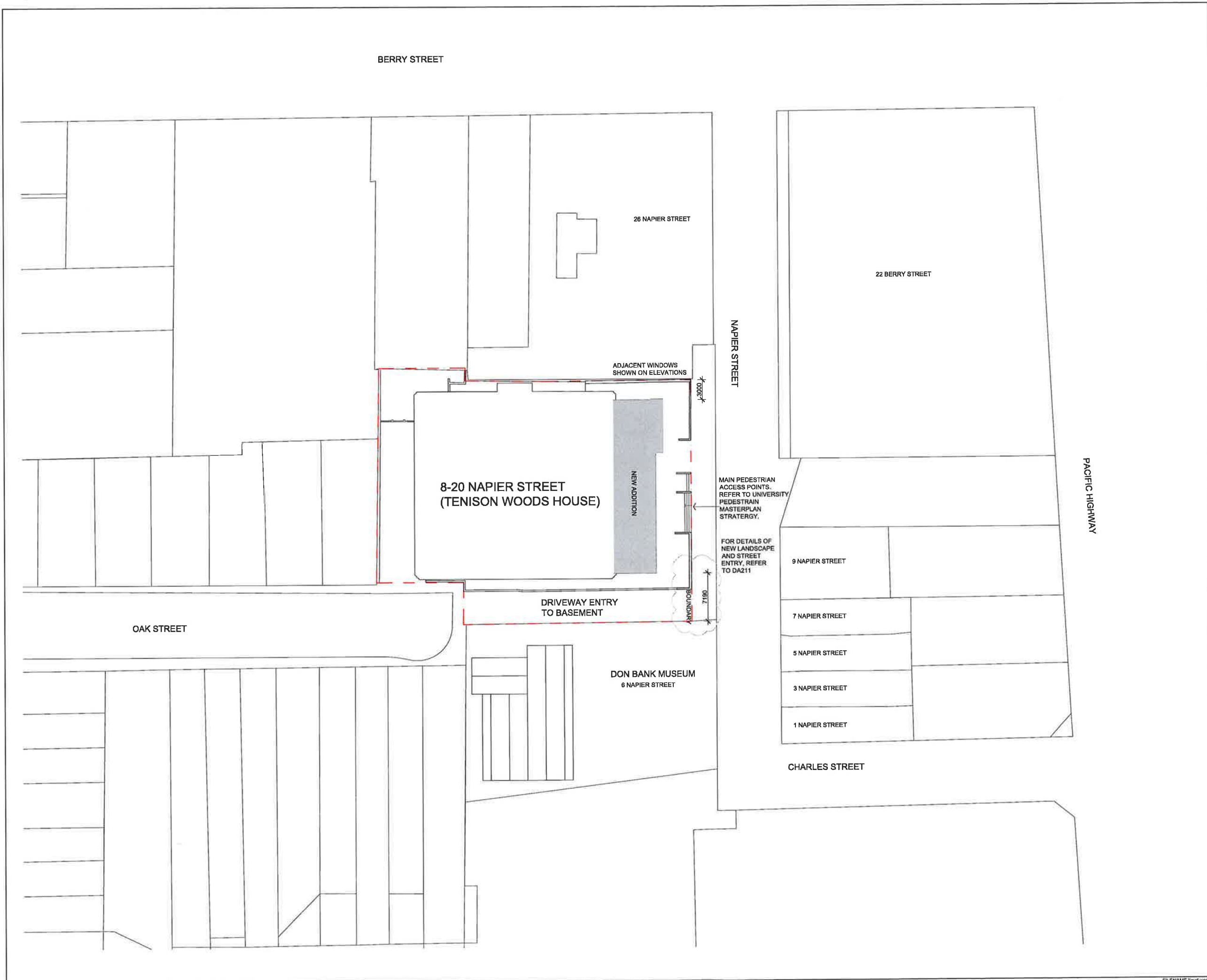
LEGEND AND NOTES
LOT 2, No. 8-20, DP 562069

STATUS

DEVELOPMENT APPLICATION

SCALE @ A1	DRAWN	CO-ORD	REVIEWED	APPROVED
1:50	GS	KR	KR	MB

PROJECT NUMBER	DRAWING NUMBER	REV
AX004165	AX004165_DA001	03



REFERENCE MAP

NORTH

NOTES

1. DO NOT SCALE DRAWINGS. WRITTEN DIMENSIONS GOVERN.

2. ALL DIMENSIONS ARE IN MILLIMETRES UNLESS NOTED OTHERWISE.

3. ALL DIMENSIONS SHALL BE VERIFIED ON SITE BEFORE PROCEEDING WITH THE WORK. HASSELL SHALL BE NOTIFIED IN WRITING OF ANY DISCREPANCIES.

4. THIS DRAWING MUST BE READ IN CONJUNCTION WITH ALL RELEVANT CONTRACTS, SPECIFICATIONS AND DRAWINGS.

5. REFER TO AX004165_DA001 FOR LEGEND AND NOTES

© COPYRIGHT OF THIS DRAWING IS VESTED IN HASSELL. LTD.

2010 HASSELL. LTD.

THIS DRAWING IS AN UNCONTROLLED COPY. UNLESS NOTED OTHERWISE.

03	DA REPORT	18.08.2012
02	DA ISSUE	27.02.2012
01	CONSULTANT COORDINATION	14.02.2012
REV	DESCRIPTION	DATE

CONSULTANT

HASSELL LIMITED ACN 007 711 436
65 CUMBERLAND STREET
SYDNEY NSW 2000 AUSTRALIA
SYDNEY@HASSELLSTUDIO.COM
T 61 2 9273 2300 F 61 2 9273 2345

HASSELL

PROJECT

AUSTRALIAN CATHOLIC UNIVERSITY
8-20 NAPIER STREET, NORTH SYDNEY
ALTERATIONS AND ADDITIONS

DRAWING TITLE

SITE PLAN
LOT 2, No. 8-20, DP 562069

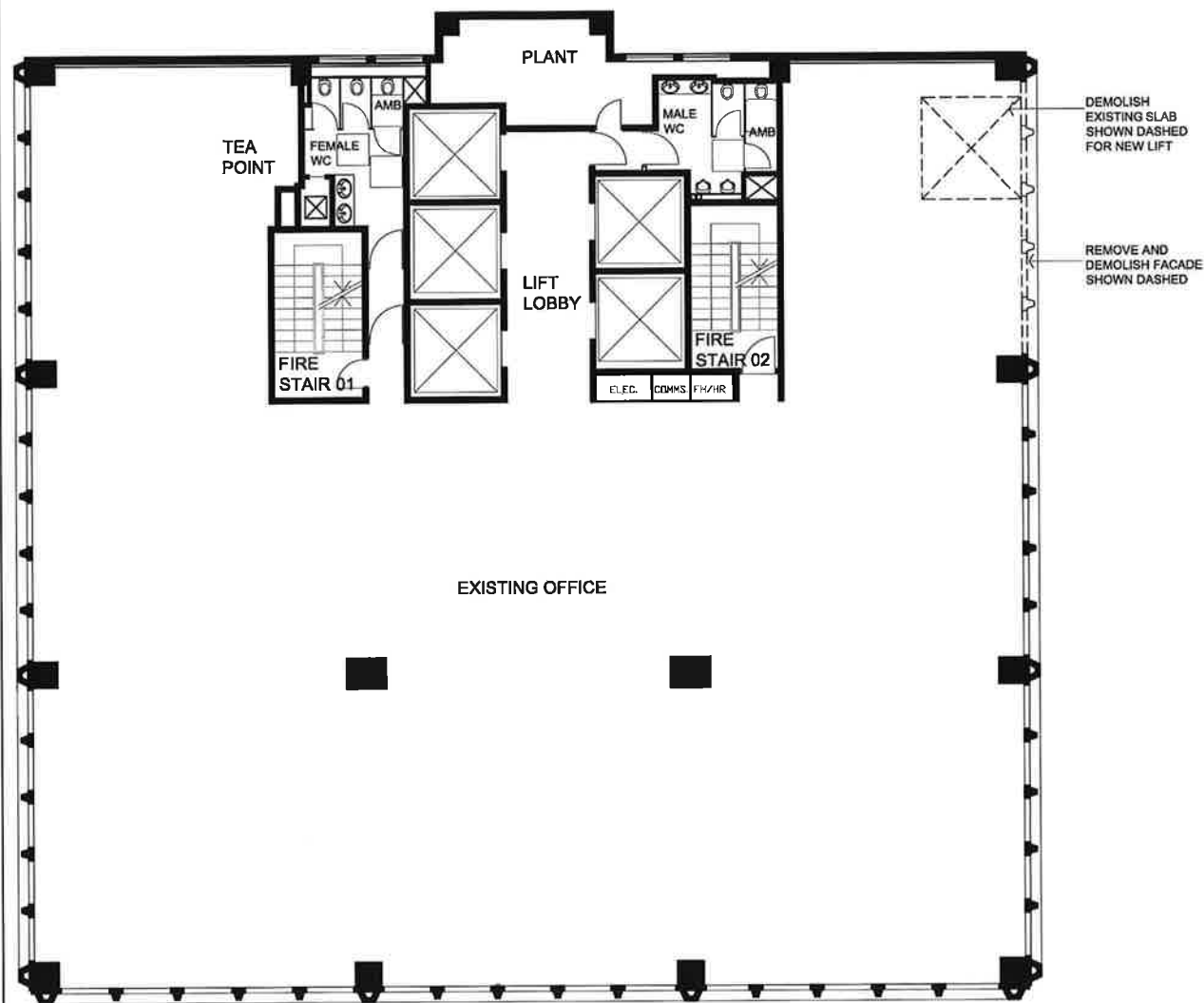
STATUS

DEVELOPMENT APPLICATION

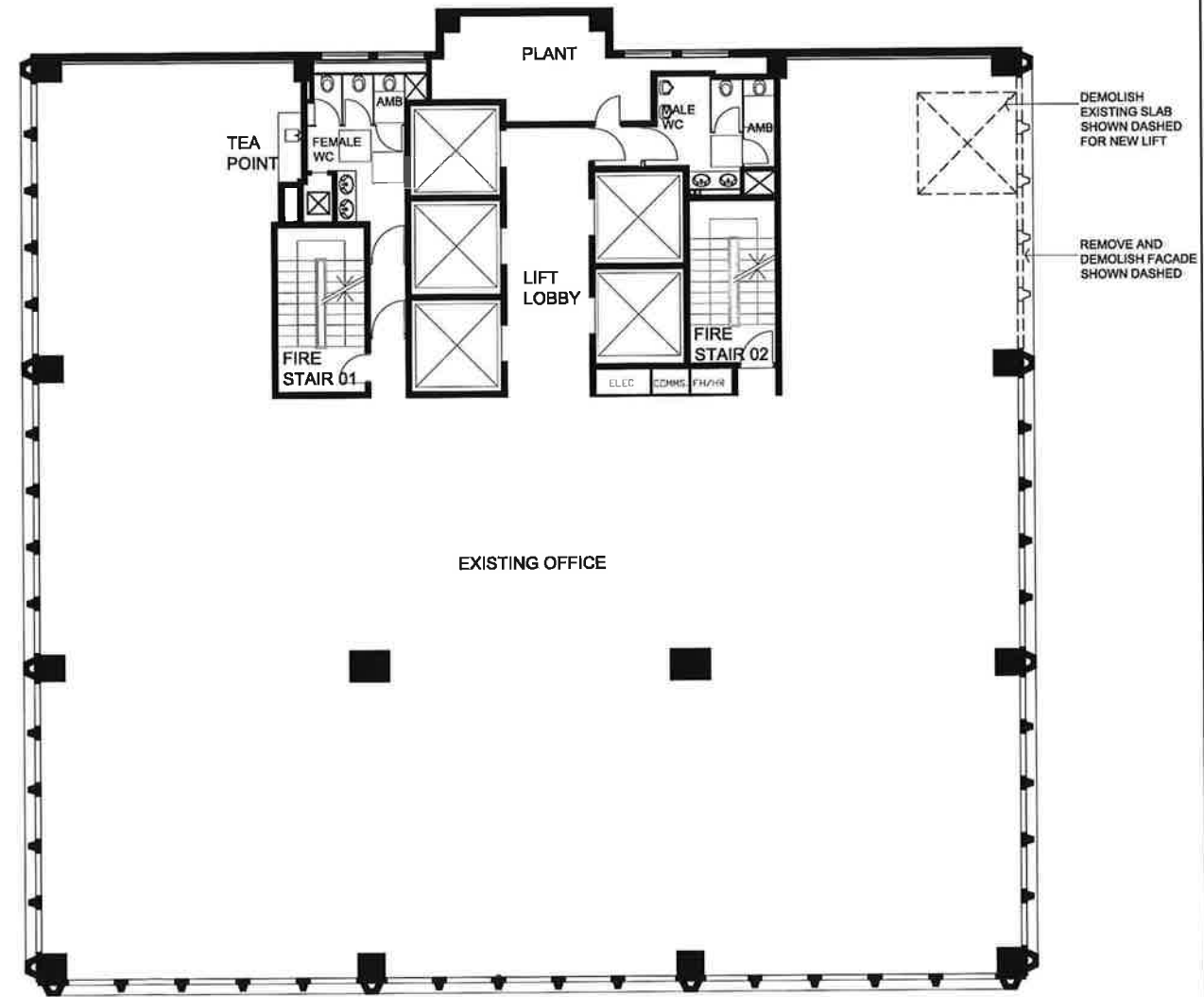
SCALE @ A1	DRAWN	CO-ORD	REVIEWED	APPROVED
1:250	GS	KR	KR	MB
PROJECT NUMBER	DRAWING NUMBER	REV		
AX004165	AX004165_DA101	03		

PRINT INFORMATION, PRINTED BY: Celeste Chen_ON: 2012/09/19_USING PAGESETUP: —_USING PLOTSTYLE TABLE: h:\hweight.ctb_PC3: Adobe PDF_P6LTS:SCALE: 1_LTS:SCALE: 0.500000

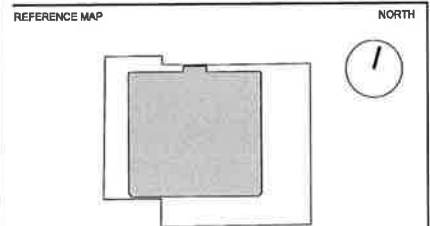
FILENAME: h:\work\hassell info\lives\Projects\004165\Modals\AutoCAD\Sheet\AX004165_DA101 SITE PLAN.dwg



01 LEVEL 05 EXISTING 1:100 @ A1



02 LEVEL 06 - 10 TYPICAL EXISTING 1:100 @ A1



- NOTES
- DO NOT SCALE DRAWINGS. WRITTEN DIMENSIONS GOVERN.
 - ALL DIMENSIONS ARE IN MILLIMETRES UNLESS NOTED OTHERWISE.
 - ALL DIMENSIONS SHALL BE VERIFIED ON SITE BEFORE PROCEEDING WITH THE WORK. HASSELL SHALL BE NOTIFIED IN WRITING OF ANY DISCREPANCIES.
 - THIS DRAWING MUST BE READ IN CONJUNCTION WITH ALL RELEVANT CONTRACTS, SPECIFICATIONS AND DRAWINGS.
 - REFER TO AX004165_DA001 FOR LEGEND AND NOTES
- © COPYRIGHT OF THIS DRAWING IS VESTED IN HASSELL LTD.
2010 HASSELL LTD.

THIS DRAWING IS AN UNCONTROLLED COPY, UNLESS NOTED OTHERWISE.

REV	DESCRIPTION	DATE
04	DA REPORT	18.09.2012
03	DA ISSUE	27.02.2012
02	CONSULTANT COORDINATION	14.02.2012
01	FOR REVIEW	23.01.2012

CONSULTANT
HASSELL LIMITED ACN 007 711 436
96 CUMBERLAND STREET
SYDNEY NSW 2060 AUSTRALIA
SYDNEY@HASSELLSTUDIO.COM
T 61 2 9273 2300 F 61 2 9273 2345

HASSELL

PROJECT
**AUSTRALIAN CATHOLIC UNIVERSITY
8-20 NAPIER STREET, NORTH SYDNEY
ALTERATIONS AND ADDITIONS**

DRAWING TITLE
**LEVEL 05-11 TYPICAL EXISTING
& PROPOSED DEMOLITION
LOT 2, No. 8-20, DP 562069**

STATUS				
DEVELOPMENT APPLICATION				
SCALE @ A1	DRAWN	CO-ORD	REVIEWED	APPROVED
1:100	GS	KR	KR	MB
PROJECT NUMBER	DRAWING NUMBER	REV		
AX004165	AX004165_DA202	04		



REFERENCE MAP

NORTH

NOTES

1. DO NOT SCALE DRAWINGS. WRITTEN DIMENSIONS GOVERN.

2. ALL DIMENSIONS ARE IN MILLIMETRES UNLESS NOTED OTHERWISE.

3. ALL DIMENSIONS SHALL BE VERIFIED ON SITE BEFORE PROCEEDING WITH THE WORK. HASSELL SHALL BE NOTIFIED IN WRITING OF ANY DISCREPANCIES.

4. THIS DRAWING MUST BE READ IN CONJUNCTION WITH ALL RELEVANT CONTRACTS, SPECIFICATIONS AND DRAWINGS.

5. REFER TO AX004165_DA001 FOR LEGEND AND NOTES.

6. COPYRIGHT OF THIS DRAWING IS VESTED IN HASSELL LTD. 2010 HASSELL LTD.

THIS DRAWING IS AN UNCONTROLLED COPY, UNLESS NOTED OTHERWISE.

04	DA REPORT	18.09.2012
03	DA ISSUE	27.02.2012
02	CONSULTANT CO-ORDINATION	14.02.2012
01	FOR REVIEW	23.01.2012
REV	DESCRIPTION	DATE

CONSULTANT

HASSELL LIMITED ACN 007 711 435
86 CUMBERLAND STREET
SYDNEY NSW 2000 AUSTRALIA
SYDNEY@HASSELLSTUDIO.COM
T 61 2 9273 2300 F 61 2 9273 2345

HASSELL

PROJECT

AUSTRALIAN CATHOLIC UNIVERSITY
8-20 NAPIER STREET, NORTH SYDNEY
ALTERATIONS AND ADDITIONS

DRAWING TITLE

PROPOSED LEVEL 04 (GROUND)
LOT 2, No. 8-20, DP 562069

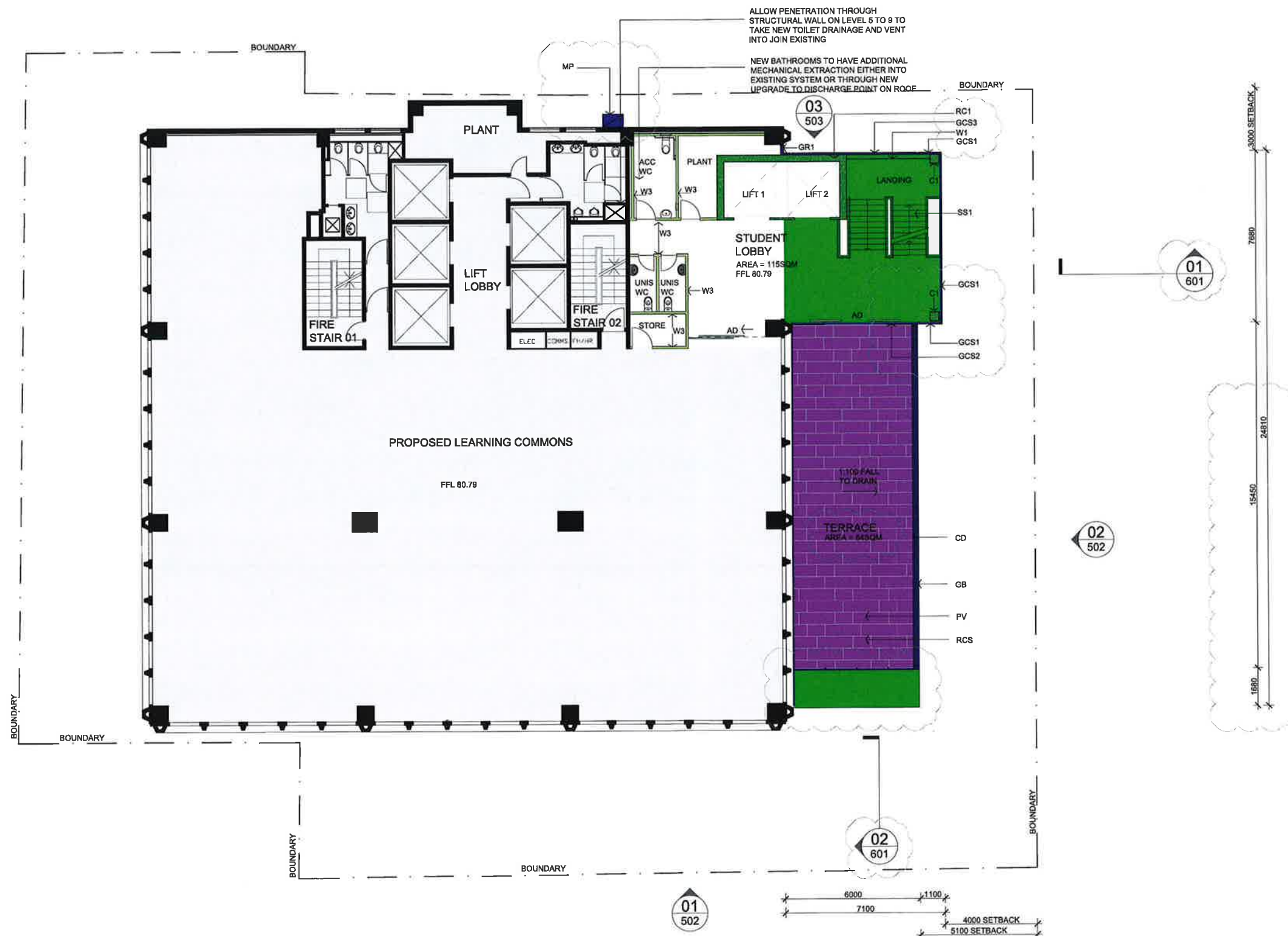
STATUS

DEVELOPMENT APPLICATION

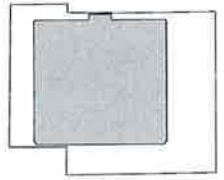
SCALE @ A1	DRAWN	CO-ORD	REVIEWED	APPROVED
1:100	GS	KR	KR	MB
PROJECT NUMBER	DRAWING NUMBER	REV		
AX004165	AX004165_DA211	04		

PRINT INFORMATION: PRINTED BY: Celeste Chan _ON: 2012/09/19 _USING PAGES: 1/1 _USING PLOTSTYLE TABLE: h:\weight.ctb _PC3: Adobe PDF _PLOTSCALE: 1 _LTSKALE: 0.020000

FILENAME: \ayd\work\hassell\info\ates\Projects\004165\Modals\AutoCAD\Sheet\AX004165_DA211 PROPOSED GROUND FLOOR.dwg



REFERENCE MAP NORTH



- NOTES**
- DO NOT SCALE DRAWINGS. WRITTEN DIMENSIONS GOVERN.
 - ALL DIMENSIONS ARE IN MILLIMETRES UNLESS NOTED OTHERWISE.
 - ALL DIMENSIONS SHALL BE VERIFIED ON SITE BEFORE PROCEEDING WITH THE WORK. HASSELL SHALL BE NOTIFIED IN WRITING OF ANY DISCREPANCIES.
 - THIS DRAWING MUST BE READ IN CONJUNCTION WITH ALL RELEVANT CONTRACTS, SPECIFICATIONS AND DRAWINGS.
 - REFER TO AX004165_DA001 FOR LEGEND AND NOTES.
 - COPYRIGHT OF THIS DRAWING IS VESTED IN HASSELL LTD. 2010 HASSELL LTD.

THIS DRAWING IS AN UNCONTROLLED COPY. UNLESS NOTED OTHERWISE.

REV	DESCRIPTION	DATE
04	DA REPORT	18.09.2012
03	DA ISSUE	27.02.2012
02	CONSULTANT CO-ORDINATION	14.02.2012
01	FOR REVIEW	23.01.2012

CONSULTANT
 HASSELL LIMITED ACN 007 711 435
 88 CUMBERLAND STREET
 SYDNEY NSW 2000 AUSTRALIA
 SYDNEY@HASSELLSTUDIO.COM
 T 61 2 9273 2300 F 61 2 9273 2345

HASSELL

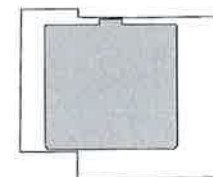
PROJECT
 AUSTRALIAN CATHOLIC UNIVERSITY
 8-20 NAPIER STREET, NORTH SYDNEY
 ALTERATIONS AND ADDITIONS

DRAWING TITLE
 PROPOSED LEVEL 05
 LOT 2, No. 8-20, DP 562069

STATUS				
DEVELOPMENT APPLICATION				
SCALE @ A1	DRAWN	CO-ORD	REVIEWED	APPROVED
1:100	GS	KR	KR	MB
PROJECT NUMBER	DRAWING NUMBER	REV		
AX004165	AX004165_DA212	04		



REFERENCE MAP



NORTH



NOTES

- DO NOT SCALE DRAWINGS. WRITTEN DIMENSIONS GOVERN.
- ALL DIMENSIONS ARE IN MILLIMETRES UNLESS NOTED OTHERWISE.
- ALL DIMENSIONS SHALL BE VERIFIED ON SITE BEFORE PROCEEDING WITH THE WORK. HASSELL SHALL BE NOTIFIED IN WRITING OF ANY DISCREPANCIES.
- THIS DRAWING MUST BE READ IN CONJUNCTION WITH ALL RELEVANT CONTRACTS, SPECIFICATIONS AND DRAWINGS.
- REFER TO AX004165_DA001 FOR LEGEND AND NOTES
- COPYRIGHT OF THIS DRAWING IS VESTED IN HASSELL, LTD., 2010 HASSELL, LTD.

THIS DRAWING IS AN UNCONTROLLED COPY, UNLESS NOTED OTHERWISE.

REV	DESCRIPTION	DATE
01	DA REPORT	18 09 2012

CONSULTANT

HASSELL LIMITED ACN 007 711 435
88 CUMBERLAND STREET
SYDNEY NSW 2000 AUSTRALIA
SYDNEY@HASSELLSTUDIO.COM
T 61 2 9273 2300 F 61 2 9273 2345

HASSELL

PROJECT

AUSTRALIAN CATHOLIC UNIVERSITY
8-20 NAPIER STREET, NORTH SYDNEY
ALTERATIONS AND ADDITIONS

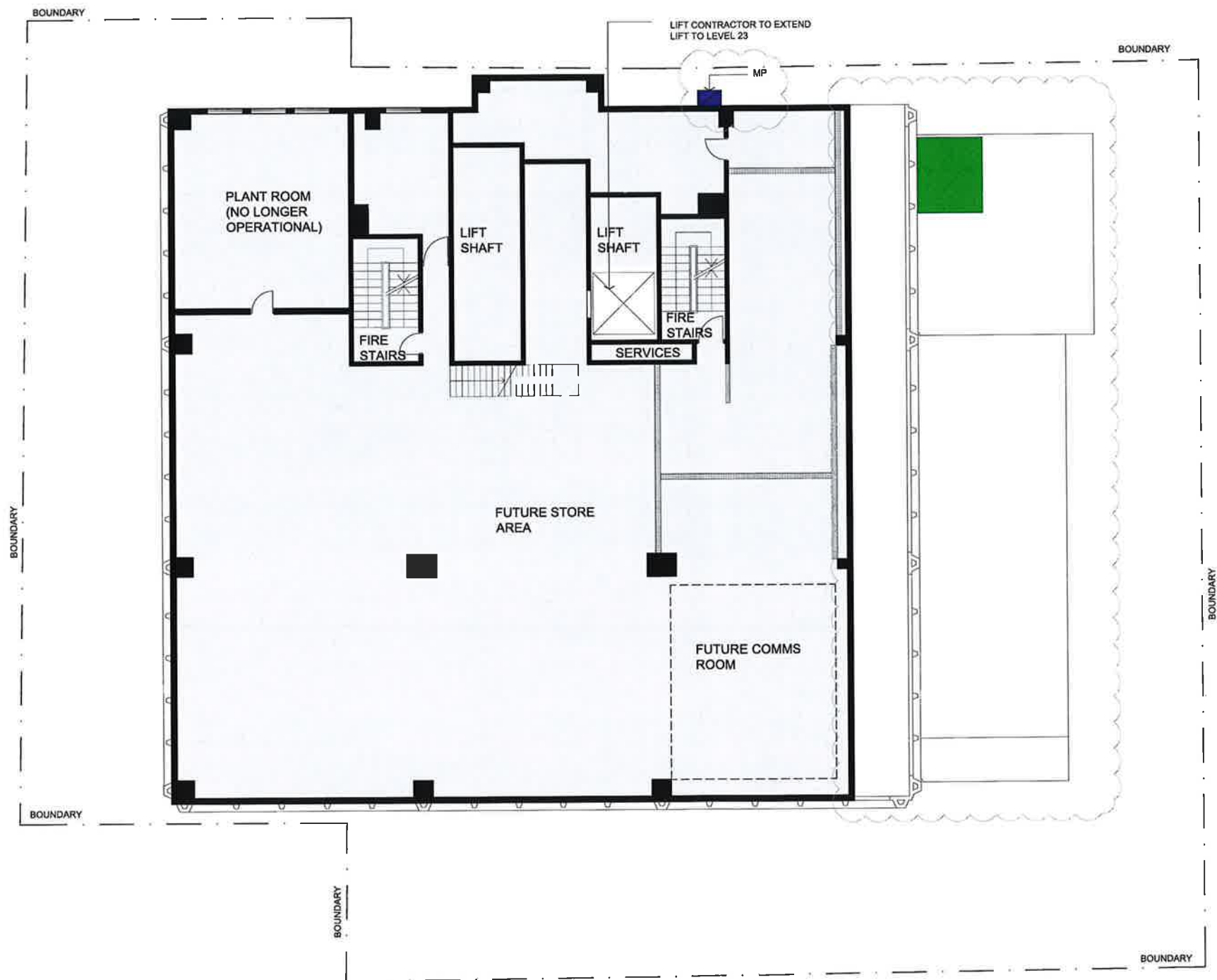
DRAWING TITLE

PROPOSED LEVEL 10
LOT 2, No. 8-20, DP 562069

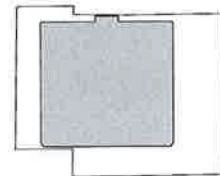
STATUS

DEVELOPMENT APPLICATION

SCALE @ A1	DRAWN	CO-ORD	REVIEWED	APPROVED
1:100	GS	KR	KR	MB
PROJECT NUMBER	DRAWING NUMBER	REV		
AX004165	AX004165_DA214	01		



REFERENCE MAP



NORTH

NOTES

- DO NOT SCALE DRAWINGS. WRITTEN DIMENSIONS GOVERN.
 - ALL DIMENSIONS ARE IN MILLIMETRES UNLESS NOTED OTHERWISE.
 - ALL DIMENSIONS SHALL BE VERIFIED ON SITE BEFORE PROCEEDING WITH THE WORK. HASSELL SHALL BE NOTIFIED IN WRITING OF ANY DISCREPANCIES.
 - THIS DRAWING MUST BE READ IN CONJUNCTION WITH ALL RELEVANT CONTRACTS, SPECIFICATIONS AND DRAWINGS.
 - REFER TO AX004165_DAO01 FOR LEGEND AND NOTES.
- © COPYRIGHT OF THIS DRAWING IS VESTED IN HASSELL LTD.
2010 HASSELL, LTD.

THIS DRAWING IS AN UNCONTROLLED COPY, UNLESS NOTED OTHERWISE.

REV	DESCRIPTION	DATE
03	DA REPORT	18.09.2012
02	DA ISSUE	27.02.2012
01	CONSULTANT CO-ORDINATION	14.02.2012

CONSULTANT

HASSELL LIMITED ACN 007 711 435
88 CUMBERLAND STREET
SYDNEY NSW 2000 AUSTRALIA
SYDNEY@HASSELLSTUDIO.COM
T 61 2 9273 2300 F 61 2 9273 2345

HASSELL

PROJECT

AUSTRALIAN CATHOLIC UNIVERSITY
8-20 NAPIER STREET, NORTH SYDNEY
ALTERATIONS AND ADDITIONS

DRAWING TITLE

PROPOSED LEVEL 23
LOT 2, No. 8-20, DP 562069

STATUS

DEVELOPMENT APPLICATION

SCALE @ A1	DRAWN	CO-ORD	REVIEWED	APPROVED
1:100	GS	KR	KR	MB
PROJECT NUMBER	DRAWING NUMBER	REV		
AX004165	AX004165_DA217	03		



- NOTES
1. DO NOT SCALE DRAWINGS. WRITTEN DIMENSIONS GOVERN.
 2. ALL DIMENSIONS ARE IN MILLIMETRES UNLESS NOTED OTHERWISE.
 3. ALL DIMENSIONS SHALL BE VERIFIED ON SITE BEFORE PROCEEDING WITH THE WORK. HASSELL SHALL BE NOTIFIED IN WRITING OF ANY DISCREPANCIES.
 4. THIS DRAWING MUST BE READ IN CONJUNCTION WITH ALL RELEVANT CONTRACTS, SPECIFICATIONS AND DRAWINGS.
 5. REFER TO AX004165_DA001 FOR LEGEND AND NOTES
 6. COPYRIGHT OF THIS DRAWING IS VESTED IN HASSELL LTD. 2010 HASSELL LTD.

THIS DRAWING IS AN UNCONTROLLED COPY, UNLESS NOTED OTHERWISE.

REV	DESCRIPTION	DATE
03	DA REPORT	18.09.2012
02	DA ISSUE	27.02.2012
01	CONSULTANT COORDINATION	15.02.2012

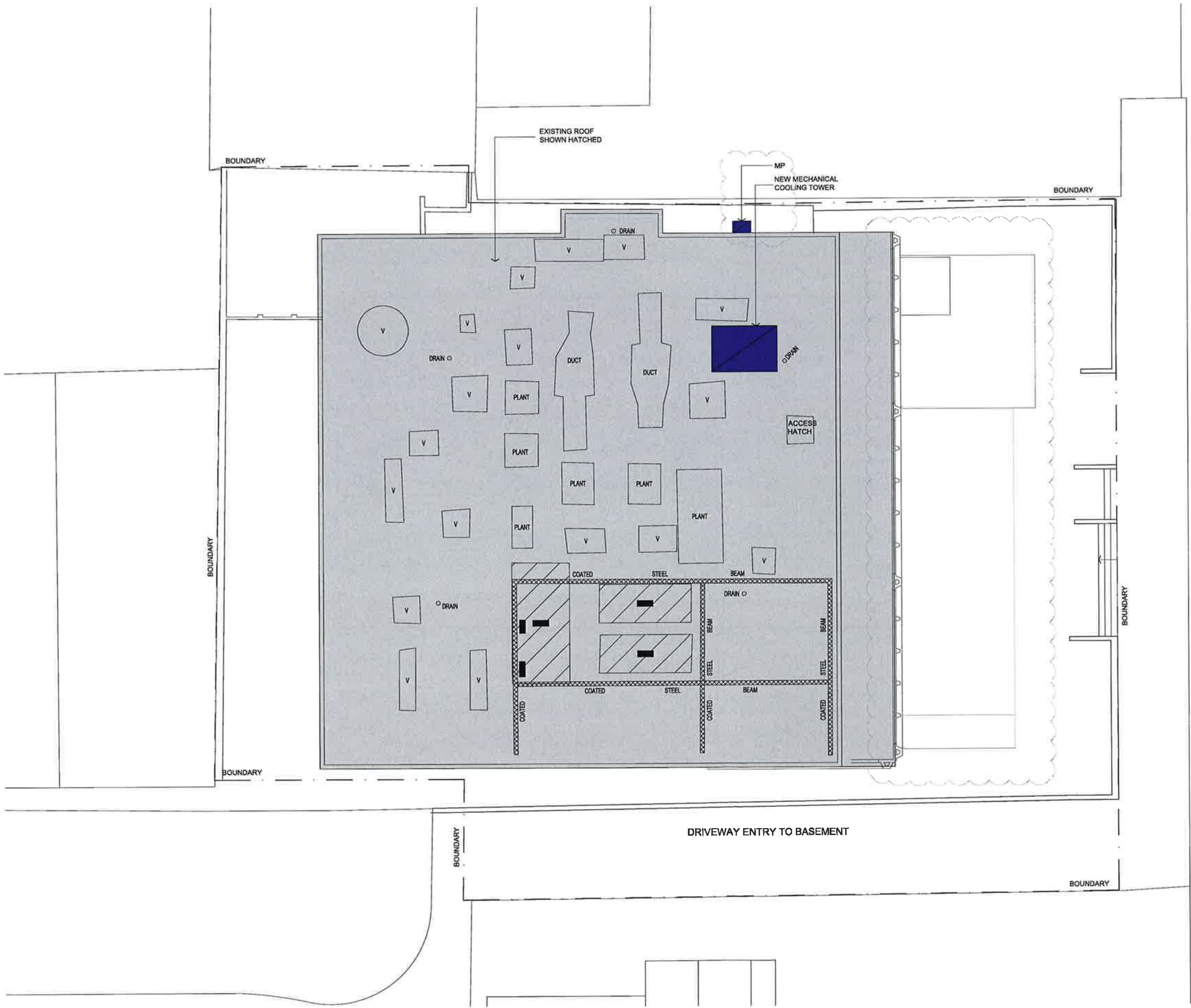
CONSULTANT
HASSELL LIMITED ACN 007 711 435
88 CUMBERLAND STREET
SYDNEY NSW 2000 AUSTRALIA
SYDNEY@HASSELLSTUDIO.COM
T 61 2 9273 2300 F 61 2 9273 2345

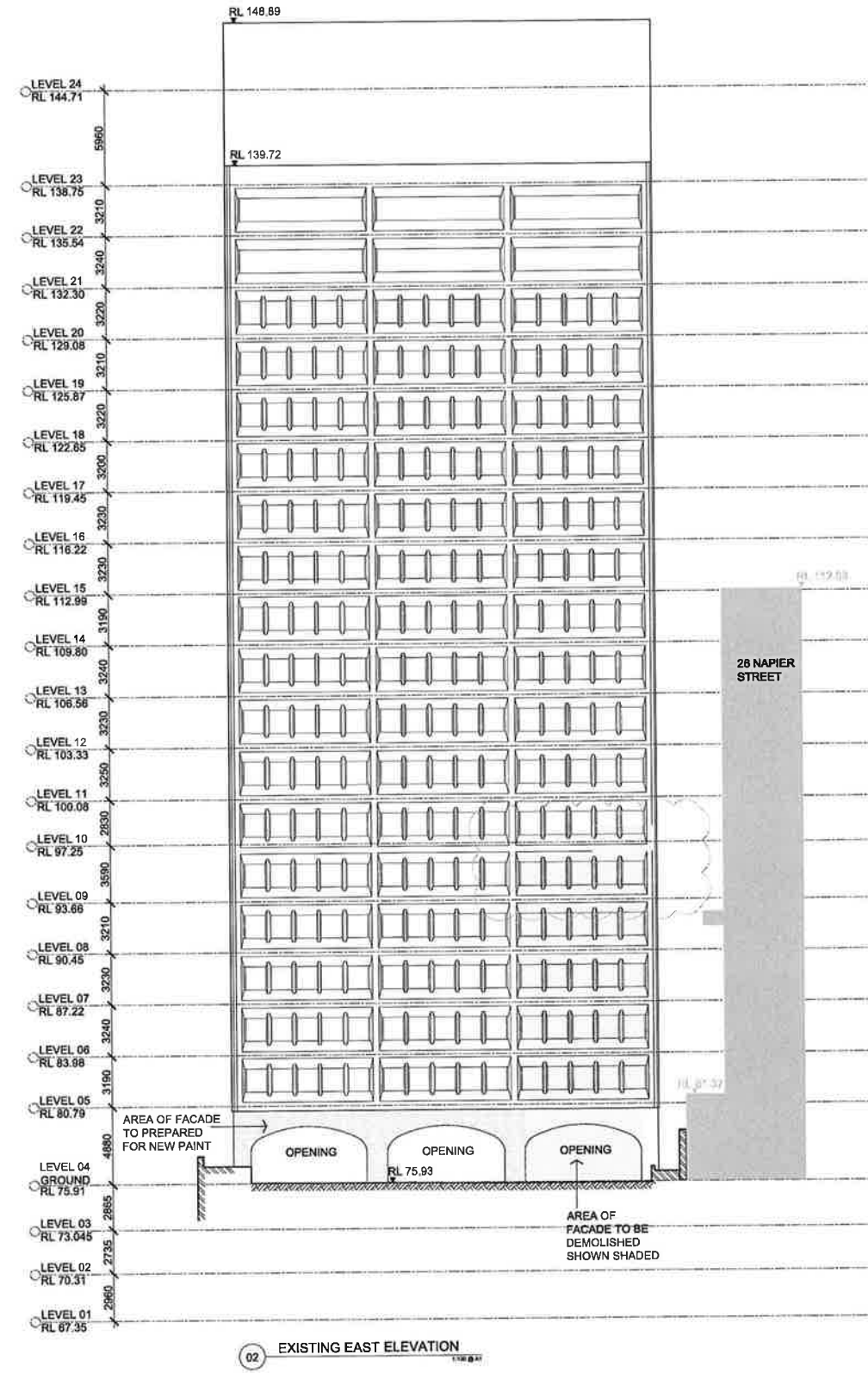
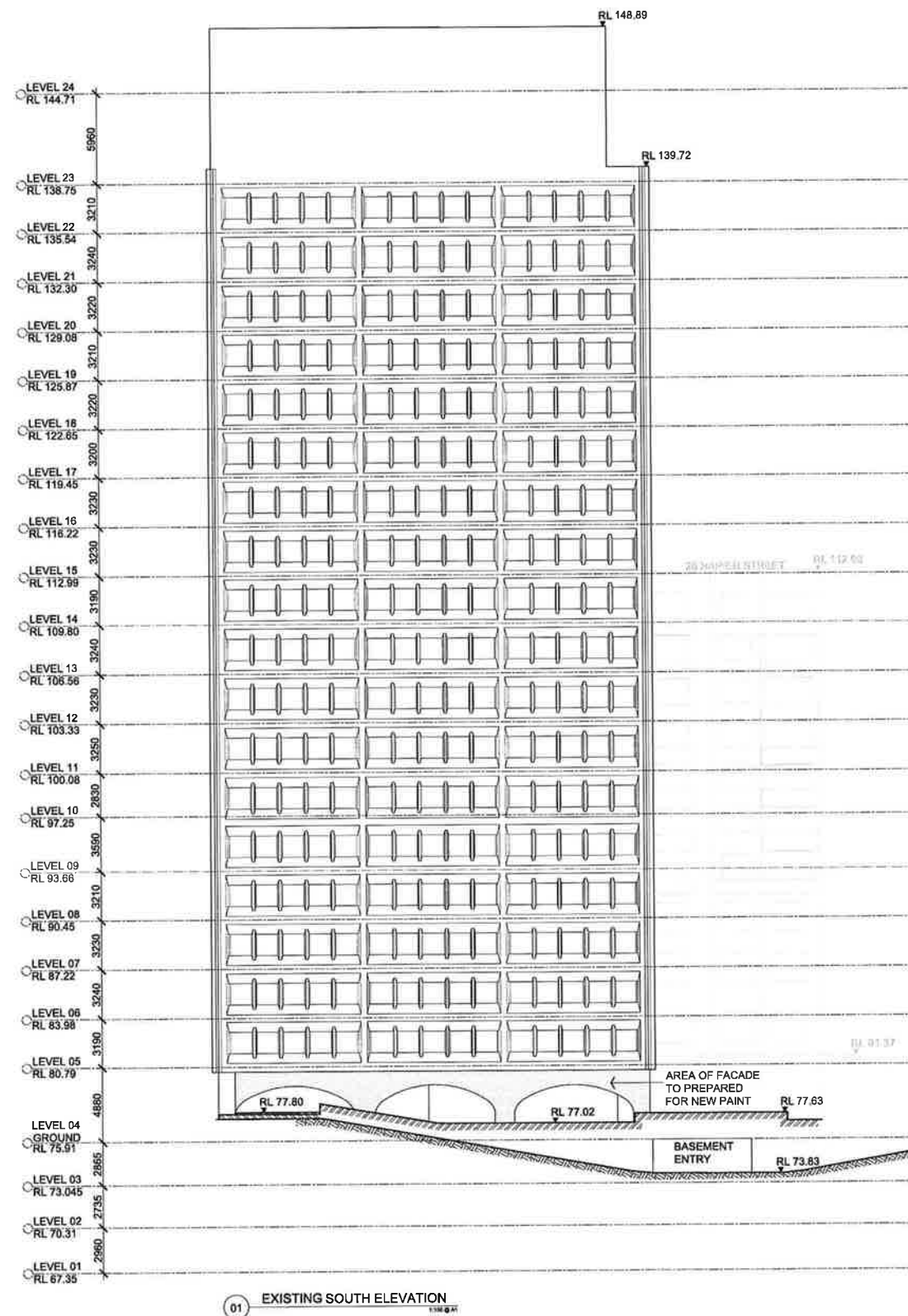
HASSELL

PROJECT
AUSTRALIAN CATHOLIC UNIVERSITY
8-20 NAPIER STREET, NORTH SYDNEY
ALTERATIONS AND ADDITIONS

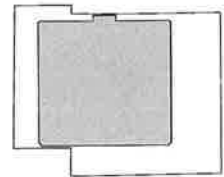
DRAWING TITLE
PROPOSED ROOF PLAN
LOT 2, No. 8-20, DP 562069

STATUS				
DEVELOPMENT APPLICATION				
SCALE @ A1	DRAWN	CO-ORD	REVIEWED	APPROVED
1:100	GS	KR	KR	MB
PROJECT NUMBER		DRAWING NUMBER		REV
AX004165		AX004165_DA218		03





REFERENCE MAP



NORTH

NOTES

1. DO NOT SCALE DRAWINGS. WRITTEN DIMENSIONS GOVERN.
2. ALL DIMENSIONS ARE IN MILLIMETRES UNLESS NOTED OTHERWISE.
3. ALL DIMENSIONS SHALL BE VERIFIED ON SITE BEFORE PROCEEDING WITH THE WORK. HASSELL SHALL BE NOTIFIED IN WRITING OF ANY DISCREPANCIES.
4. THIS DRAWING MUST BE READ IN CONJUNCTION WITH ALL RELEVANT CONTRACTS, SPECIFICATIONS AND DRAWINGS.
5. REFER TO AX004165_DA001 FOR LEGEND AND NOTES
6. COPYRIGHT OF THIS DRAWING IS VESTED IN HASSELL LTD. 2010 HASSELL LTD.

THIS DRAWING IS AN UNCONTROLLED COPY, UNLESS NOTED OTHERWISE.

REV	DESCRIPTION	DATE
03	DA REPORT	18.09.2012
02	DA ISSUE	27.02.2012
01	CONSULTANT COORDINATION	14.02.2012

CONSULTANT

HASSELL LIMITED ACN 007 711 435
88 CLIMBERLAND STREET
SYDNEY NSW 2000 AUSTRALIA
SYDNEY@HASSELLSTUDIO.COM
T 61 2 9273 2300 F 61 2 9273 2345

HASSELL

PROJECT

AUSTRALIAN CATHOLIC UNIVERSITY
8-20 NAPIER STREET, NORTH SYDNEY
ALTERATIONS AND ADDITIONS

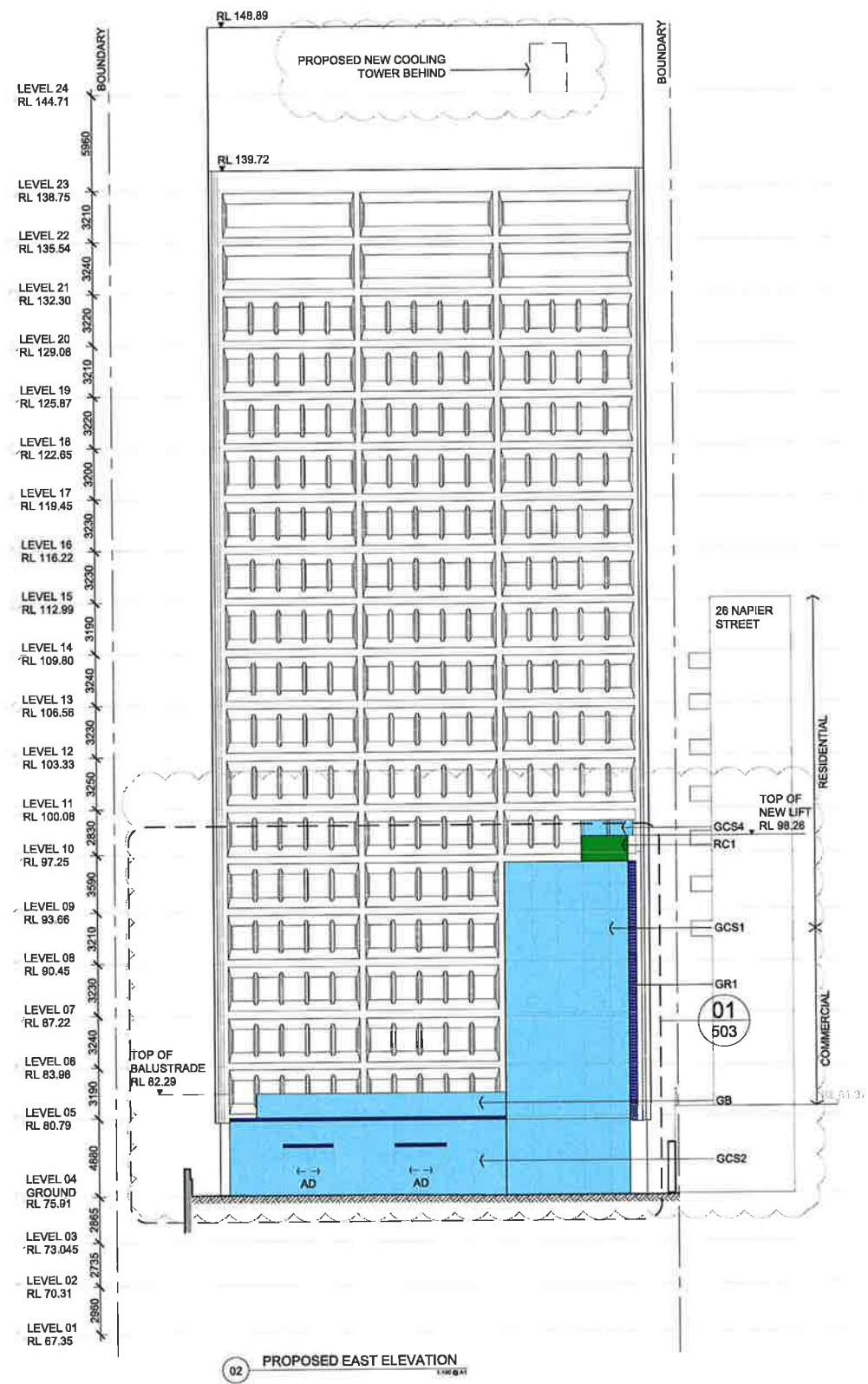
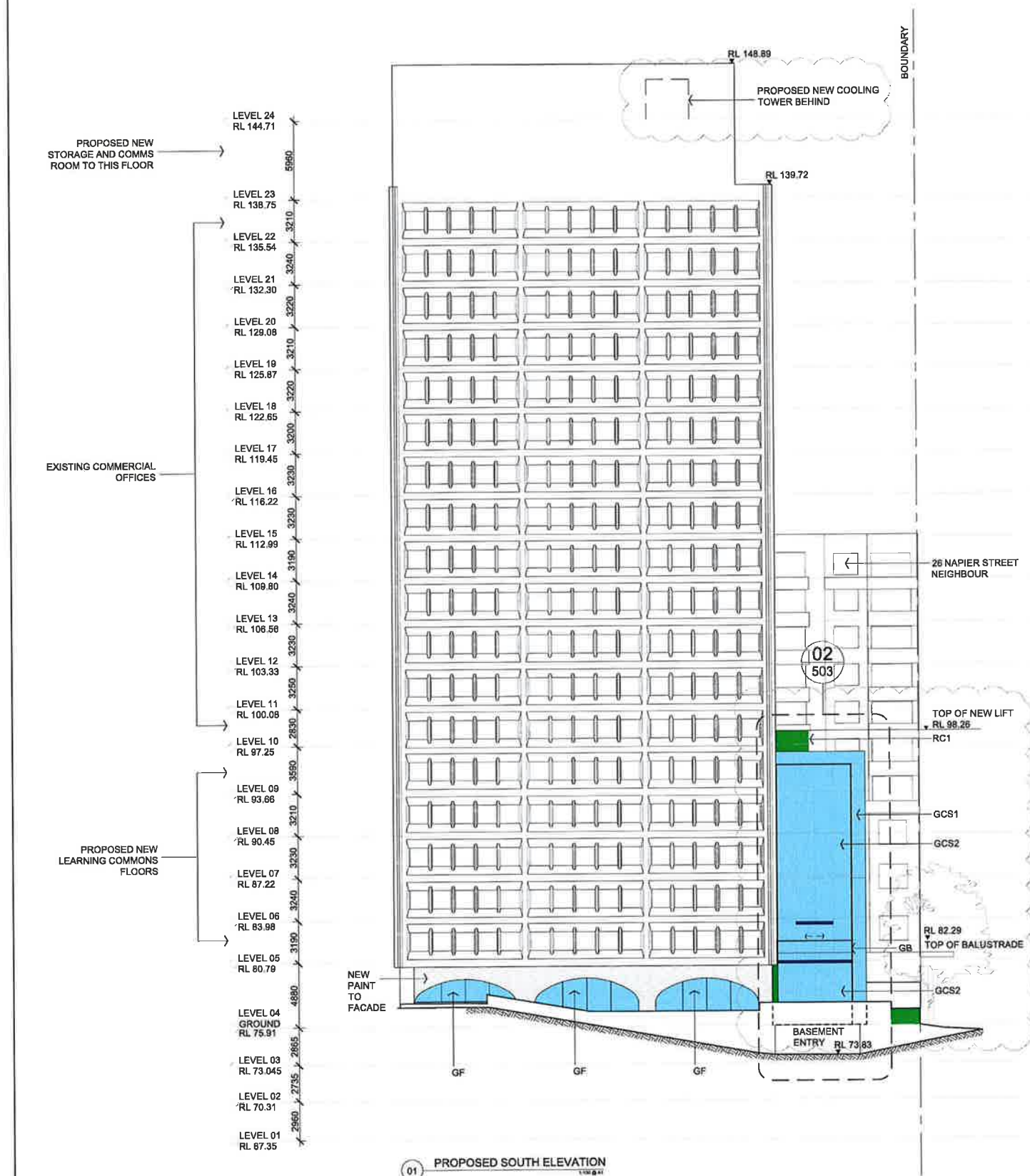
DRAWING TITLE

EXISTING ELEVATIONS

STATUS

DEVELOPMENT APPLICATION

SCALE @ A1	DRAWN	CO-ORD	REVIEWED	APPROVED
1:200	GS	KR	KR	MB
PROJECT NUMBER	DRAWING NUMBER	REV		
AX004165	AX004165_DA501	03		



REFERENCE MAP

NORTH

NOTES

- DO NOT SCALE DRAWINGS. WRITTEN DIMENSIONS GOVERN.
- ALL DIMENSIONS ARE IN MILLIMETRES UNLESS NOTED OTHERWISE.
- ALL DIMENSIONS SHALL BE VERIFIED ON SITE BEFORE PROCEEDING WITH THE WORK. HASSELL SHALL BE NOTIFIED IN WRITING OF ANY DISCREPANCIES.
- THIS DRAWING MUST BE READ IN CONJUNCTION WITH ALL RELEVANT CONTRACTS, SPECIFICATIONS AND DRAWINGS.
- REFER TO AX004165_DA001 FOR LEGEND AND NOTES
- COPYRIGHT OF THIS DRAWING IS VESTED IN HASSELL, LTD. 2010 HASSELL, LTD.

THIS DRAWING IS AN UNCONTROLLED COPY, UNLESS NOTED OTHERWISE.

REV	DESCRIPTION	DATE
03	DA REPORT	18.09.2012
02	DA ISSUE	27.02.2012
01	CONSULTANT COORDINATION	14.02.2012

CONSULTANT

HASSELL LIMITED ACN 007 711 435
86 CUMBERLAND STREET
SYDNEY NSW 2000 AUSTRALIA
SYDNEY@HASSELLSTUDIO.COM
T 61 2 9273 2300 F 61 2 9273 2345

HASSELL

PROJECT

AUSTRALIAN CATHOLIC UNIVERSITY
8-20 NAPIER STREET, NORTH SYDNEY
ALTERATIONS AND ADDITIONS

DRAWING TITLE

PROPOSED ELEVATIONS

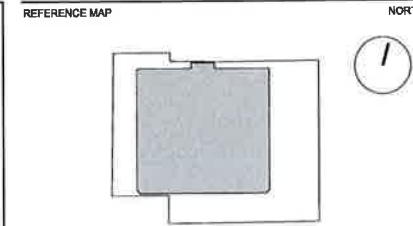
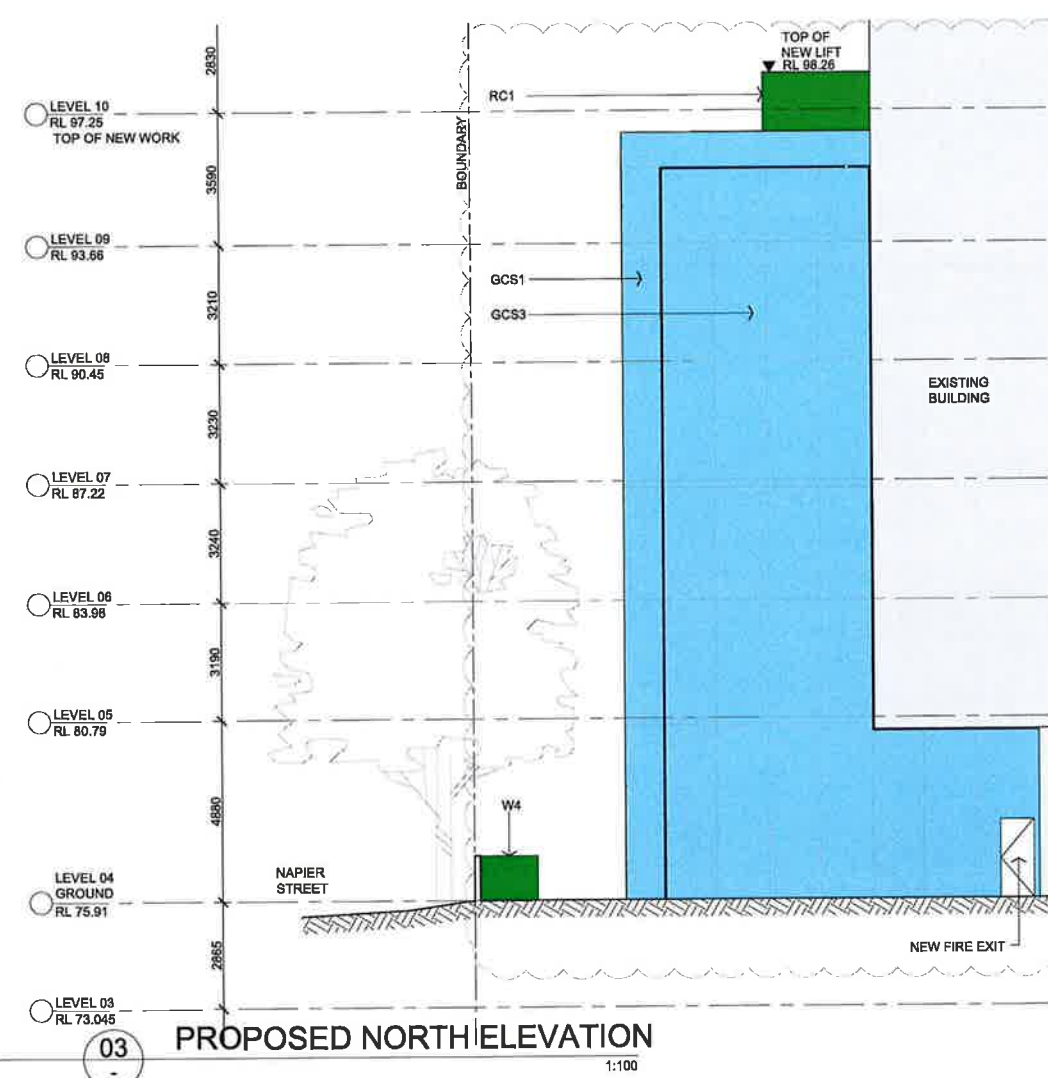
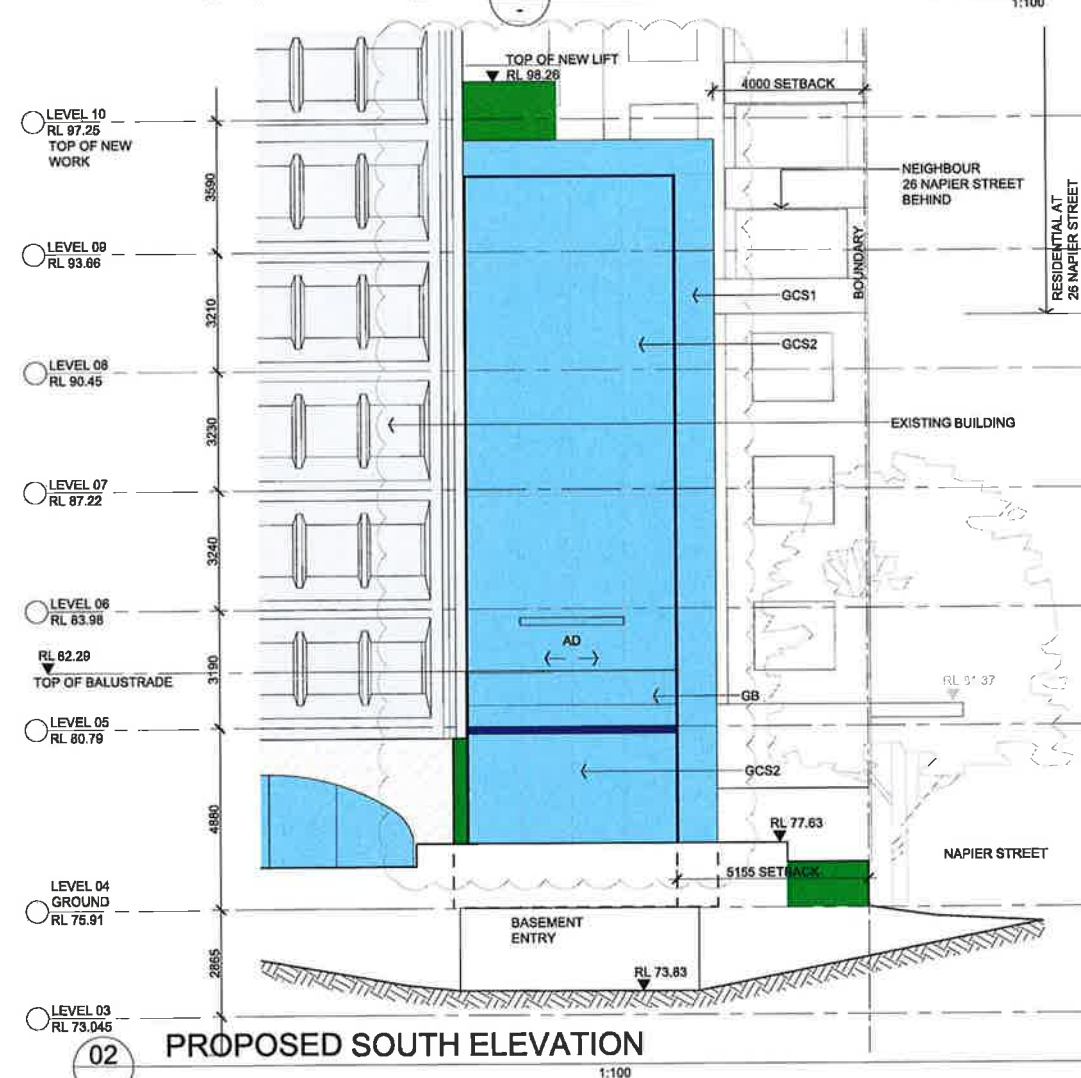
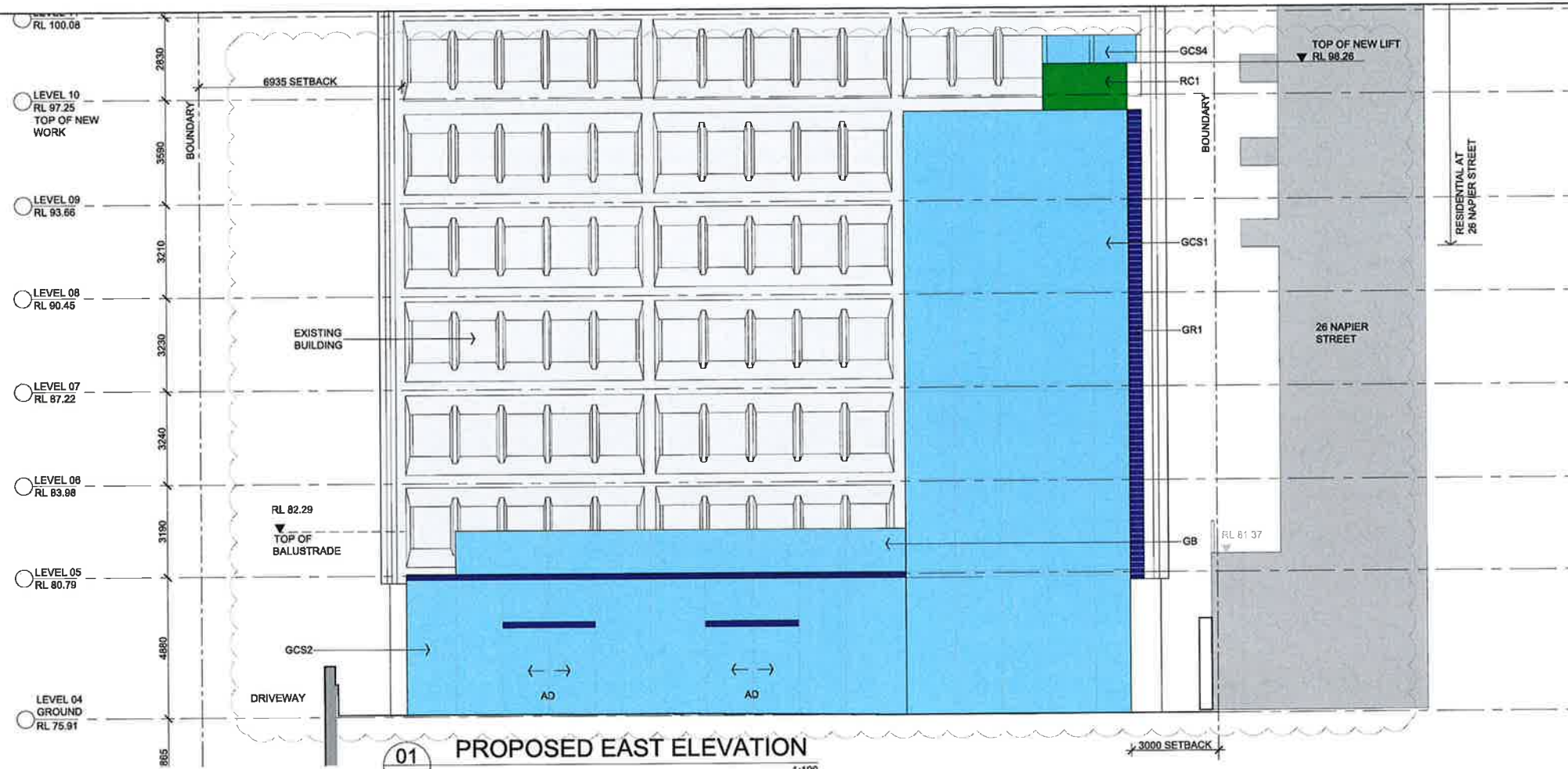
STATUS

DEVELOPMENT APPLICATION

SCALE @ A1	DRAWN	CO-ORD	REVIEWED	APPROVED
1:200	GS	KR	KR	MB

PROJECT NUMBER	DRAWING NUMBER	REV
AX004165	AX004165_DA502	03

FILENAME: Vayd\work\hassell\info\lives\Projects\004165\Models\AutoCAD\Sheet\AX004165_DA502 PROPOSED ELEVATIONS.dwg



- NOTES**
- DO NOT SCALE DRAWINGS. WRITTEN DIMENSIONS GOVERN.
 - ALL DIMENSIONS ARE IN MILLIMETRES UNLESS NOTED OTHERWISE.
 - ALL DIMENSIONS SHALL BE VERIFIED ON SITE BEFORE PROCEEDING WITH THE WORK. HASSELL SHALL BE NOTIFIED IN WRITING OF ANY DISCREPANCIES.
 - THIS DRAWING MUST BE READ IN CONJUNCTION WITH ALL RELEVANT CONTRACTS, SPECIFICATIONS AND DRAWINGS.
 - REFER TO AX004165_DA001 FOR LEGEND AND NOTES
- © COPYRIGHT OF THIS DRAWING IS VESTED IN HASSELL LTD.
2010 HASSELL LTD.

THIS DRAWING IS AN UNCONTROLLED COPY, UNLESS NOTED OTHERWISE.

REV	DESCRIPTION	DATE
03	DA REPORT	18.09.2012
02	DA ISSUE	27.02.2012
01	CONSULTANT COORDINATION	14.02.2012

CONSULTANT

HASSELL LIMITED ACN 007 711 435
86 CUMBERLAND STREET
SYDNEY NSW 2000 AUSTRALIA
SYDNEY@HASSELLSTUDIO.COM
T 61 2 9273 2300 F 61 2 9273 2345

HASSELL

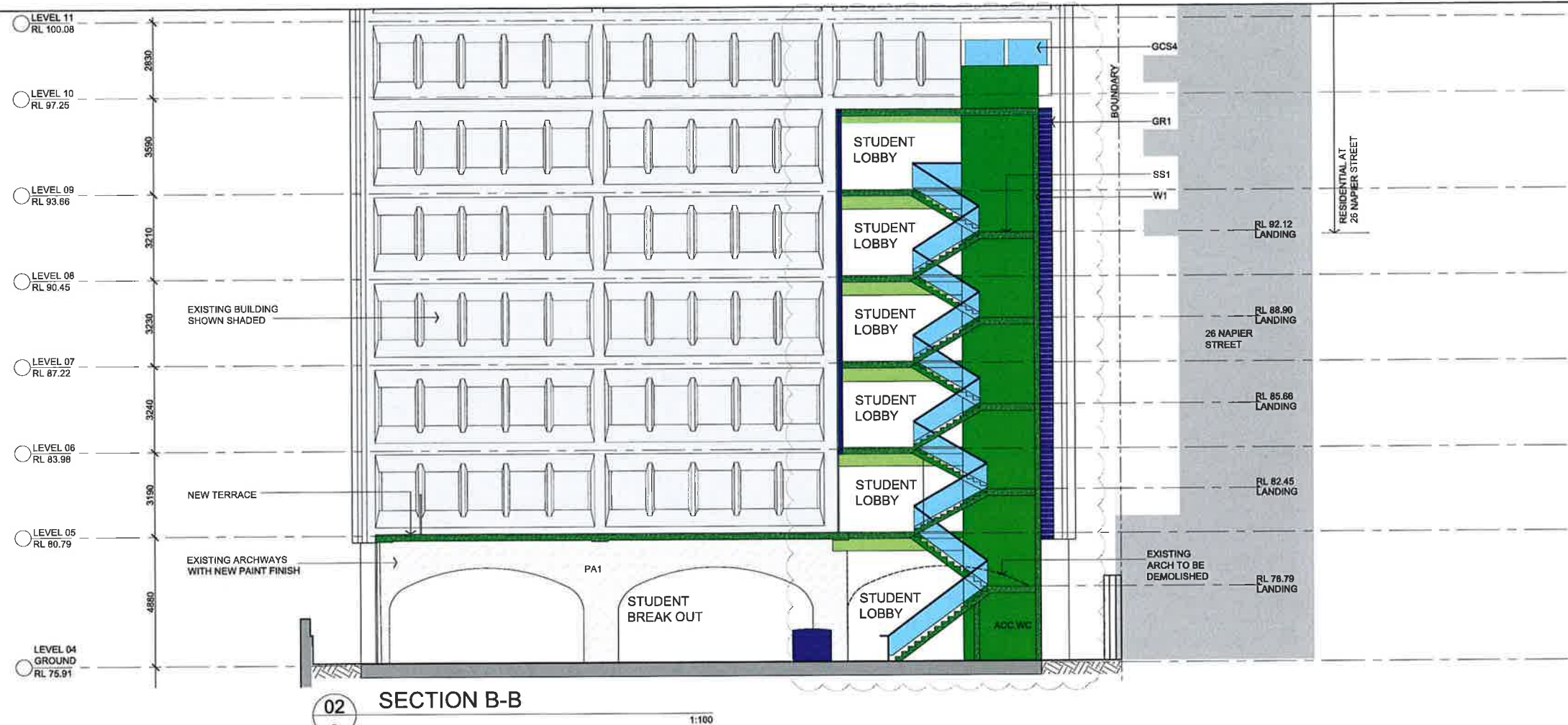
PROJECT

AUSTRALIAN CATHOLIC UNIVERSITY
8-20 NAPIER STREET, NORTH SYDNEY
ALTERATIONS AND ADDITIONS

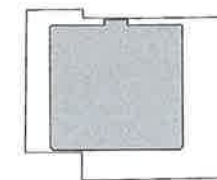
DRAWING TITLE

PROPOSED ELEVATIONS SHEET 2

STATUS				
DEVELOPMENT APPLICATION				
SCALE @ A1	DRAWN	CO-ORD	REVIEWED	APPROVED
1:100	GS	KR	KR	MB
PROJECT NUMBER	DRAWING NUMBER	REV.		
AX004165	AX004165_DA503	03		



REFERENCE MAP



NOTES

1. DO NOT SCALE DRAWINGS. WRITTEN DIMENSIONS GOVERN.
 2. ALL DIMENSIONS ARE IN MILLIMETRES UNLESS NOTED OTHERWISE.
 3. ALL DIMENSIONS SHALL BE VERIFIED ON SITE BEFORE PROCEEDING WITH THE WORK. HASSELL SHALL BE NOTIFIED IN WRITING OF ANY DISCREPANCIES.
 4. THIS DRAWING MUST BE READ IN CONJUNCTION WITH ALL RELEVANT CONTRACTS, SPECIFICATIONS AND DRAWINGS.
 5. REFER TO AX004165_DAO01 FOR LEGEND AND NOTES
- © COPYRIGHT OF THIS DRAWING IS VESTED IN HASSELL, LTD.
2018 HASSELL, LTD.

THIS DRAWING IS AN UNCONTROLLED COPY, UNLESS NOTED OTHERWISE

03	DA REPORT	18.09.2012
02	DA ISSUE	27.02.2012
01	CONSULTANT COORDINATION	14.02.2012

REV	DESCRIPTION	DATE
-----	-------------	------

CONSULTANT

HASSELL LIMITED ACN 007 711 435
66 CUMBERLAND STREET
SYDNEY NSW 2000 AUSTRALIA
SYDNEY@HASSELLSTUDIO.COM
T 61 2 9273 2300 F 61 2 9273 2345

HASELL

PROJECT

AUSTRALIAN CATHOLIC UNIVERSITY
8-20 NAPIER STREET, NORTH SYDNEY
ALTERATIONS AND ADDITIONS

DRAWING TITLE

PROPOSED SECTION

STATUS

DEVELOPMENT APPLICATION

SCALE @ A1	DRAWN	CO-ORD	REVIEWED	APPROVED
1:100	GS	KR	KR	MB

PROJECT NUMBER	DRAWING NUMBER	REV
AX004165	AX004165 DA601	03